

iC Device Manager

User Manual

Service

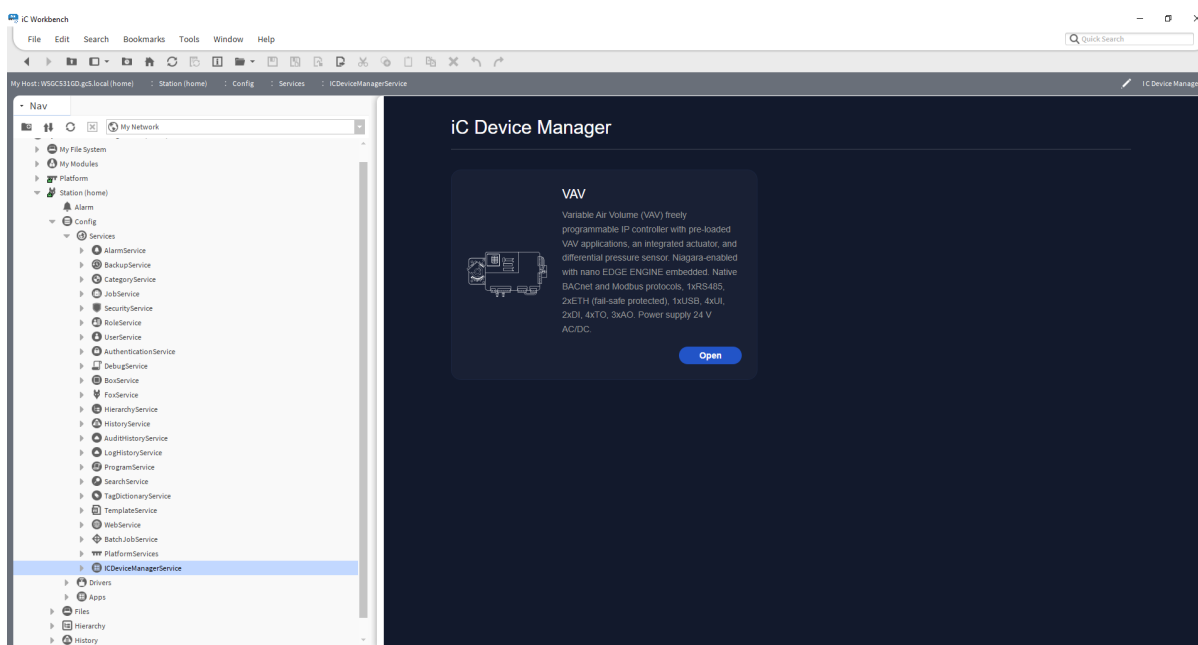


Table of Contents

1	Introduction	3
1.1	Revision History.....	3
2	Supported Devices.....	4
3	System Requirements	5
3.1	Supported Niagara Versions	5
3.2	System Requirements	5
3.3	License.....	5
4	Installation	6
4.1	Adding the Module.....	6

1 Introduction

The iC Device Manager is a dedicated Niagara service that enables easy configuration and commissioning directly within the Niagara environment, eliminating the need for external tools.

Designed for system integrators and technicians, it offers a streamlined, responsive user interface for quick and intuitive operation. It is especially valuable as a time-saving tool in projects where the Niagara Framework is used as the BMS platform.

Version 1.0 fully supports the configuration, commissioning, and balancing of the VAV14-IP controller. Future updates will expand its capabilities, making it a central utility for managing a broad range of iSMA CONTROLLI products. This ensures a consistent user experience and simplifies device setup across the entire system.

1.1 Revision History

Date	Rev.	Description
18 Jun 2025	1.0	First edition

2 Supported Devices

iC Device Manager service supports the iSMA CONTROLLI VAV14-IP controller:

- VAV14-IP: the service enables configuration of the parameters in the VAV14-IP controller in three areas:
 - VAV application;
 - flow settings;
 - balancing.

For advanced configuration and application-specific settings, please refer to the [VAV14-IP Software user manual](#).

3 System Requirements

3.1 Supported Niagara Versions

iC Device Manager is dedicated to Niagara 4 and supports Niagara 4.14 and higher.

3.2 System Requirements

To use the iC Device Manager service, a PC with Window operating system and running a compatible version of the Niagara Framework.

3.3 License

No license is required to use the iC Device Manager service.

4 Installation

4.1 Adding the Module

The iC Device Manager service is a part of the iC Workbench and iC Niagara Expansion Pack (from version 4.14).

Note: For a correct operation of the iC Device Manager service, it is required also to have the latest iClib version.

To start using the iC Device Manager service, go to the Palette window (in iC Workbench or other Niagara tool) and select the Open Palette option.

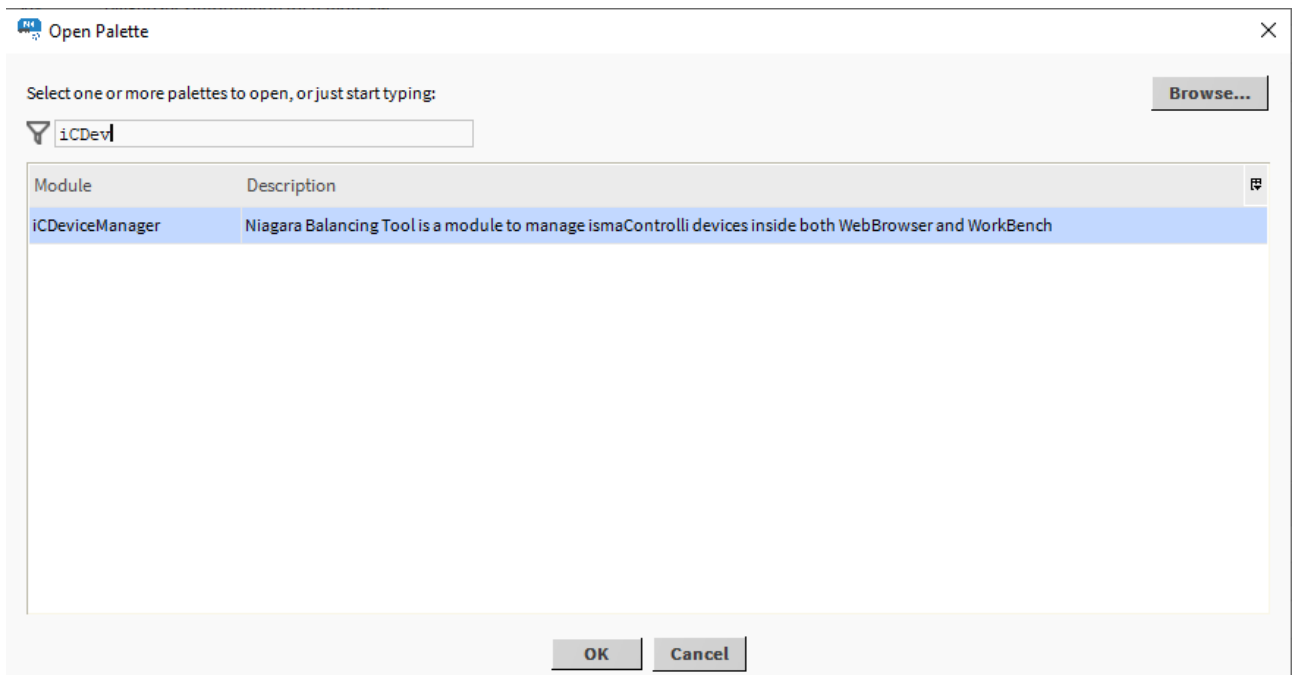


Figure 1. Opening palette

Confirm with OK, the palette is ready to use in the Palette window.

The only location where the service will operate properly is Config → Services.

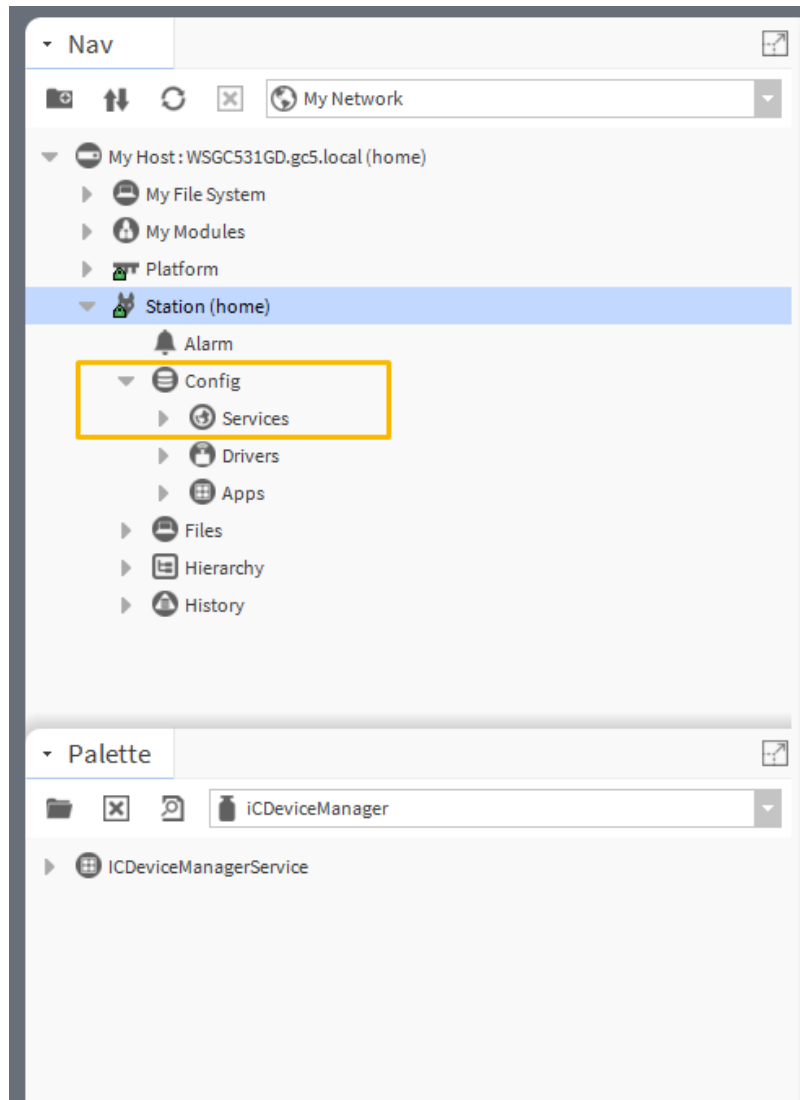


Figure 2. Services location

Drag and drop the iC Device Manager service to Services.