

iC Niagara Expansion Pack

User Manual

Quick Start-up



Table of Contents

1	Introduction	3
1.1	Revision History.....	3
2	System Requirements	4
3	Installation Steps	5
3.1	Step 1: Download the Installer	5
3.2	Step 2: Setup Wizard	5
3.3	Step 3: Files Review	6
3.4	Step 4: Destination Folder.....	6
3.5	Step 5: Installation.....	7
3.6	Step 6: Summary	8
3.7	Step 7: Using Modules in the Niagara Workbench	9

1 Introduction

The iC Niagara Expansion Pack is a comprehensive file installer designed for Niagara Framework users who do not utilize iC Workbench, but use iSMA CONTROLLI products like MAC36 controllers, I/O modules, and others. This all-in-one installer includes the latest versions of all iC software products specifically tailored for the Niagara Framework, ensuring users have access to the most current and compatible tools for their projects.

This manual shows how to successfully install the iC Niagara Expansion Pack on the local PC.

The iC Niagara Expansion Pack includes the following elements:

- MAC36NL support pack: clean dist, distribution files;
- MAC36PRO support pack: clean dist, distribution files;
- iSMA_IO module;
- iSMA_HDMI module;
- iC-Lib;
- iSMA Modbus tunnel;
- iSMA 2D Graphics module;
- iSMA 3D Graphics module;
- nE2 Link;
- iC SmartView Config service.

1.1 Revision History

Date	Rev.	Description
18 Jul 2024	1.0	First edition

Table 1. Revision history

2 System Requirements

The iC Niagara Expansion Pack requires the following environment for correct operation:

- a PC running a compatible version of the Niagara Framework (pre-installed, supported Niagara version on the PC is required);

For example, iC Niagara Expansion Pack 4.13.2 requires the Niagara Workbench 4.13.2 installed on the device.

- admin privileges for installation;
- at least 4 GB free disk space for iC software products and MAC36 support files.

3 Installation Steps

To use the iC Niagara Expansion Pack, follow these steps:

- Step 1: Download the Installer
- Step 2: Setup Wizard
- Step 3: Files Review
- Step 4: Destination Folder
- Step 5: Installation
- Step 6: Summary
- Step 7: Using Modules in the Niagara Workbench

3.1 Step 1: Download the Installer

Download the iC Niagara Expansion Pack in the iC Connect tool.

In order for the installer to work properly, the user must have a compatible version of Niagara on the PC. The installer is issued for specific versions of Niagara and can be identified by the version number of the installer.

Example: The user has Vykon N4 Supervisor 4.10.7.x installed on the PC. Dedicated for this version of Niagara Workbench is iC Niagara Expansion Pack 4.10.7.x

3.2 Step 2: Setup Wizard

Open the wizard. The setup wizard is started. Once again, make sure that the version of the iC Niagara Expansion Pack is identical as the installed Niagara instance.

Make sure to close all other Niagara applications before continuing to ensure uninterrupted installation.

Click Next.

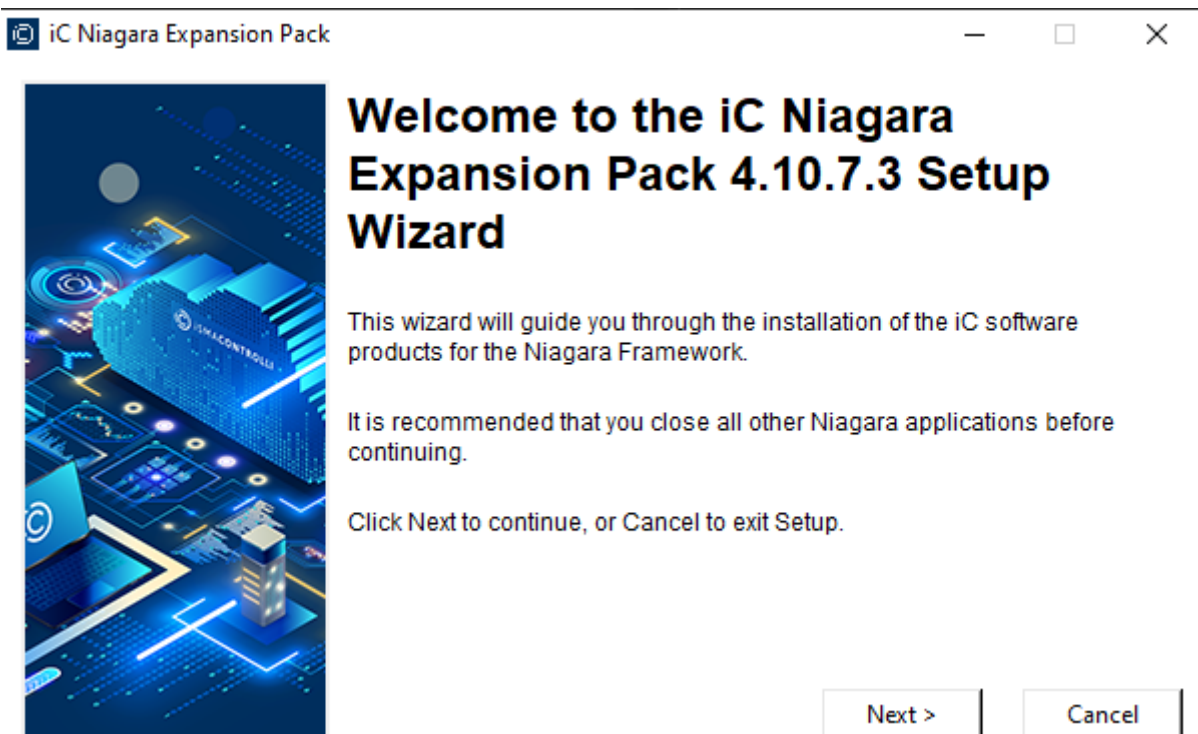


Figure 1. Setup wizard

3.3 Step 3: Files Review

The second window of the setup wizard allows to select files to install:

- MAC36PRO support pack;
- MAC36NL support pack;
- iC modules.

Software	Description
MAC36PRO support pack	Contains files required for a proper operation of the MAC36PRO controller with the new Niagara version, clean-dist and OS versions. Provides a list of clean-dist, Niagara Framework, and OS versions.
MAC36NL support pack	Contains files required for a proper operation of the MAC36NL controller with the new Niagara version, clean-dist and OS versions. Provides a list of clean-dist, Niagara Framework, and OS versions.
iC modules	Modules, services and graphic packages that extend the functionality of Niagara by iSMA CONTROLLI.

By default, all files are checked to be installed. Uncheck an element if it is not required to be installed. Click Next to continue.

Note: To ensure product compatibility, it is recommended to install all files supported by the installer.

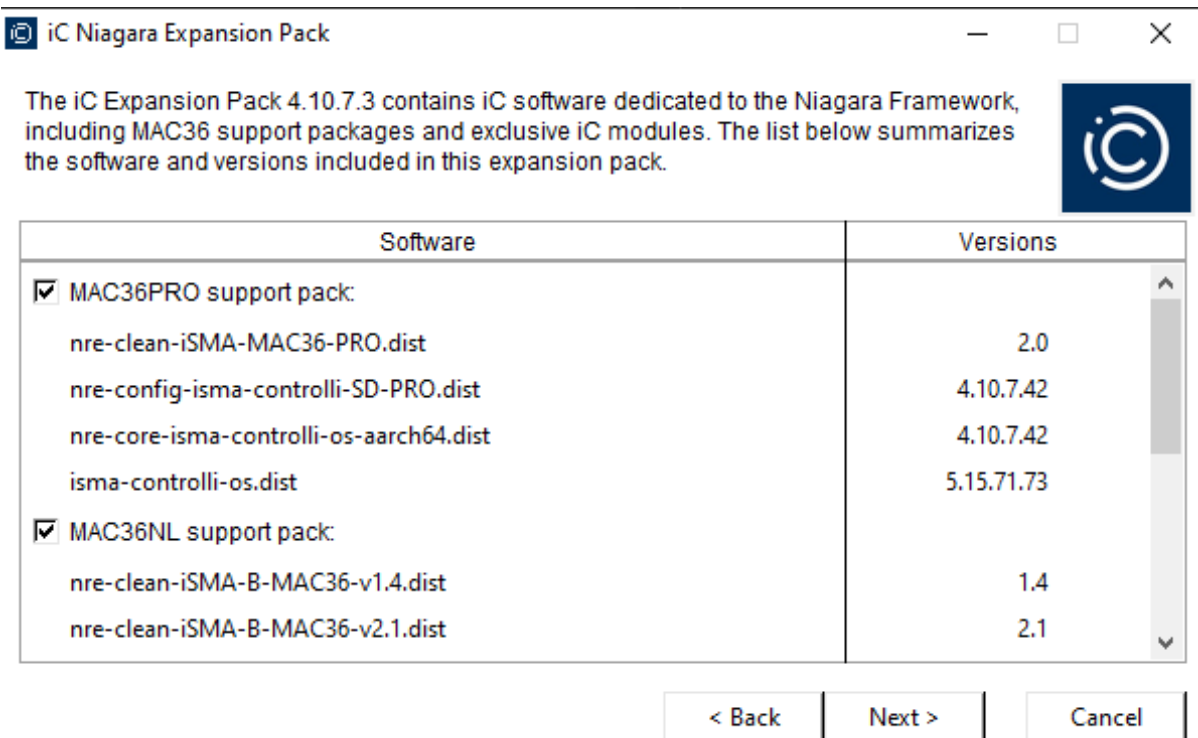


Figure 2. Files review

3.4 Step 4: Destination Folder

The next window allows to select the supported Niagara installation path. The folder with a compatible version of Niagara is detected automatically. If not, select the folder manually, clicking on the folder icon.

At this point, it is also possible to select an option to install iC Modules to all detected versions of Niagara. The option is checked by default. If not required, uncheck the option.

Note: Only iC modules will be installed in the detected versions. MAC36PRO and MAC36NL support packs support only selected versions of Niagara, shown in the path.

Click Next to continue.

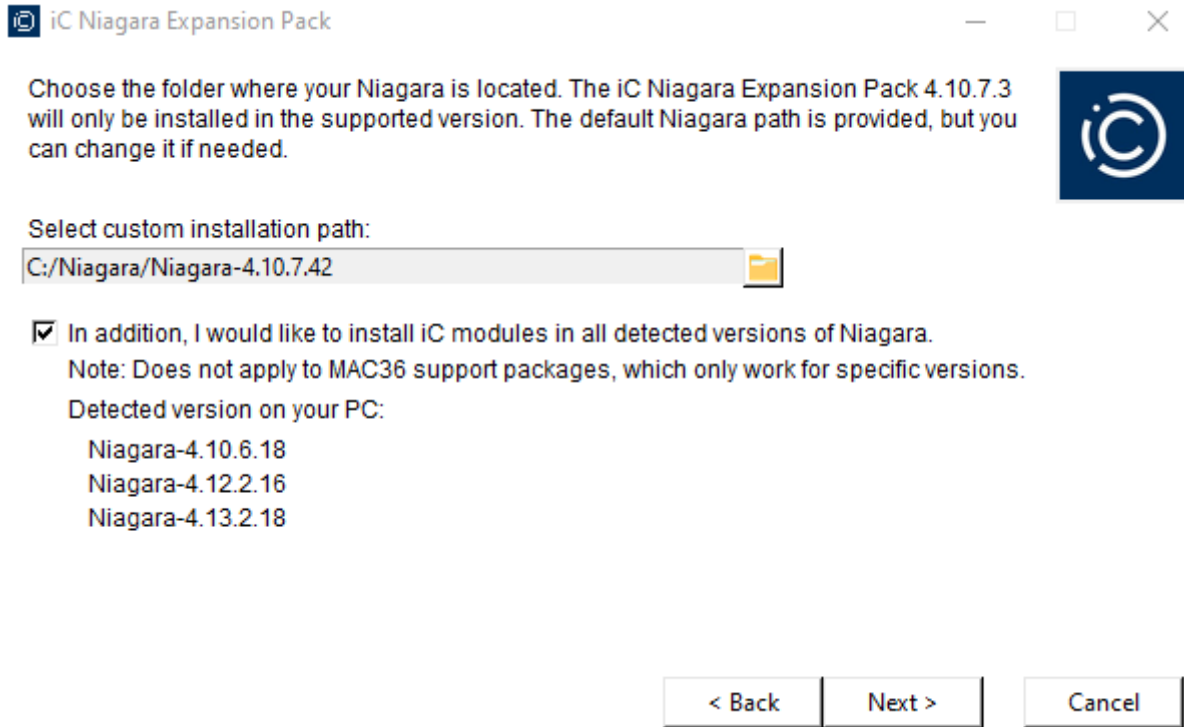


Figure 3. Destination folder

3.5 Step 5: Installation

Files to install and destination folder have been selected. Check the summary of files to install. The installer is ready to start. Click Install to launch.

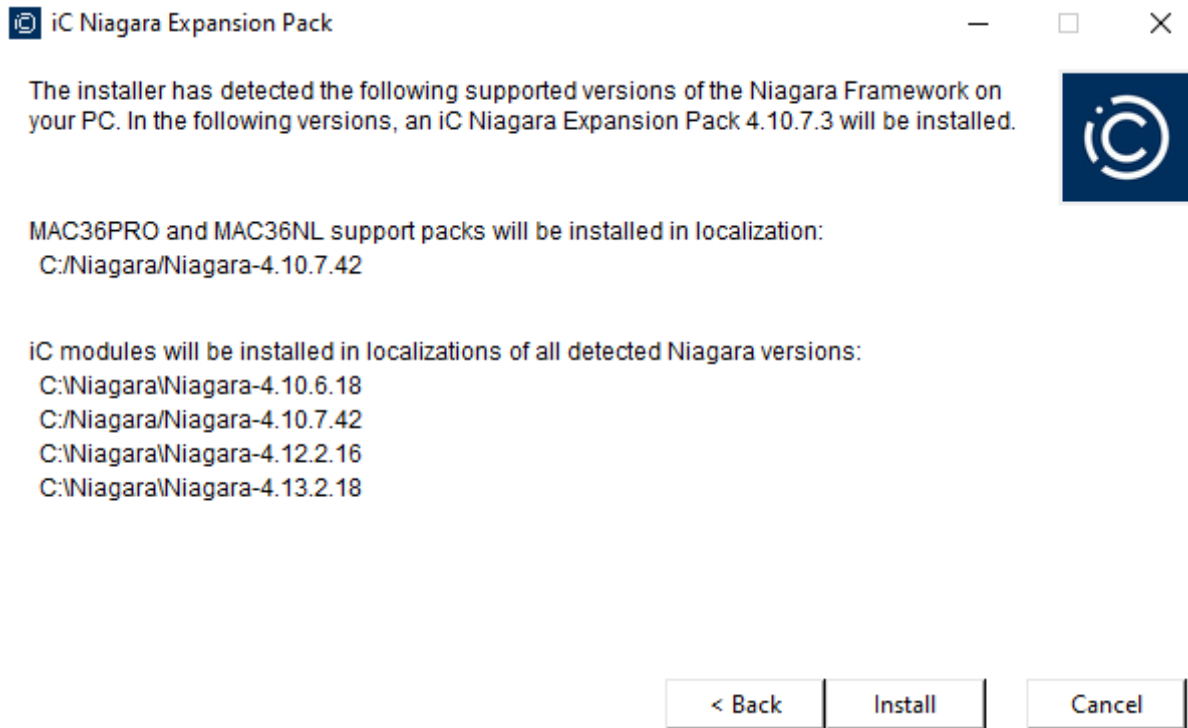


Figure 4. Pre-installation window

Installation process is running. To stop the running process for any reason, click Cancel.

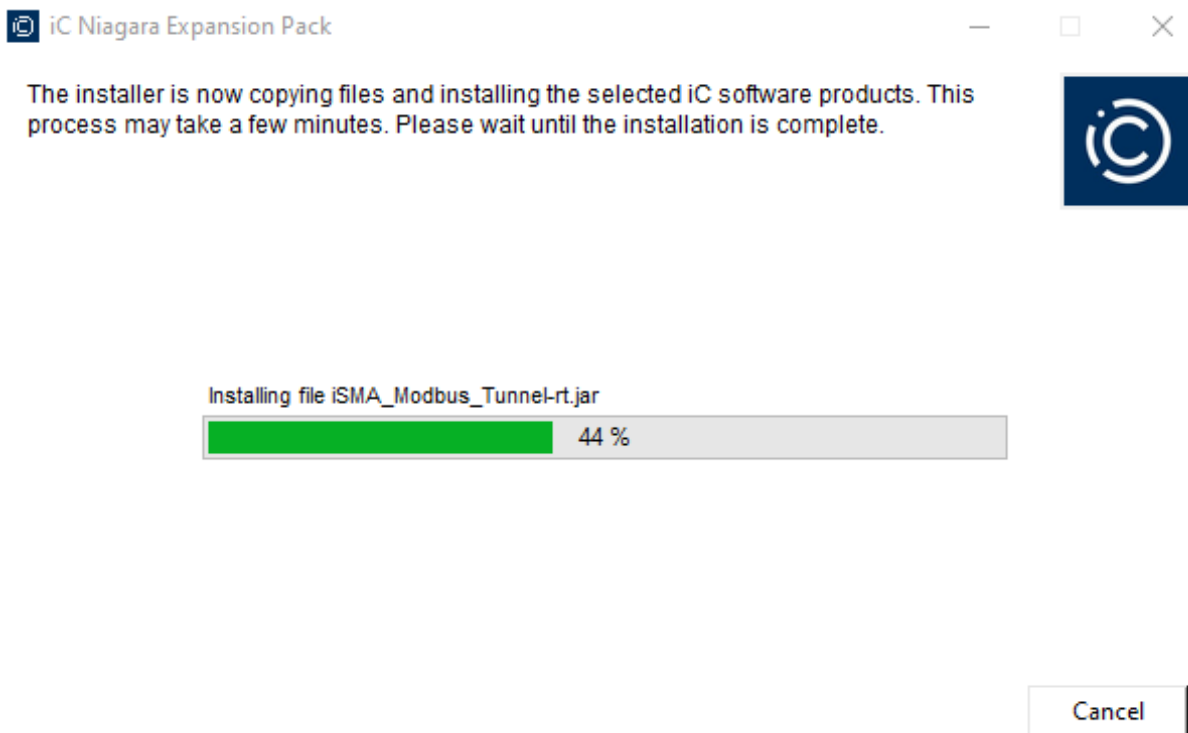


Figure 5. Installation process in progress

3.6 Step 6: Summary

The installation is now completed. Click Finish to complete the process.

All selected files are now saved in the selected locations. Niagara is ready to work with iSMA CONTROLLI products.

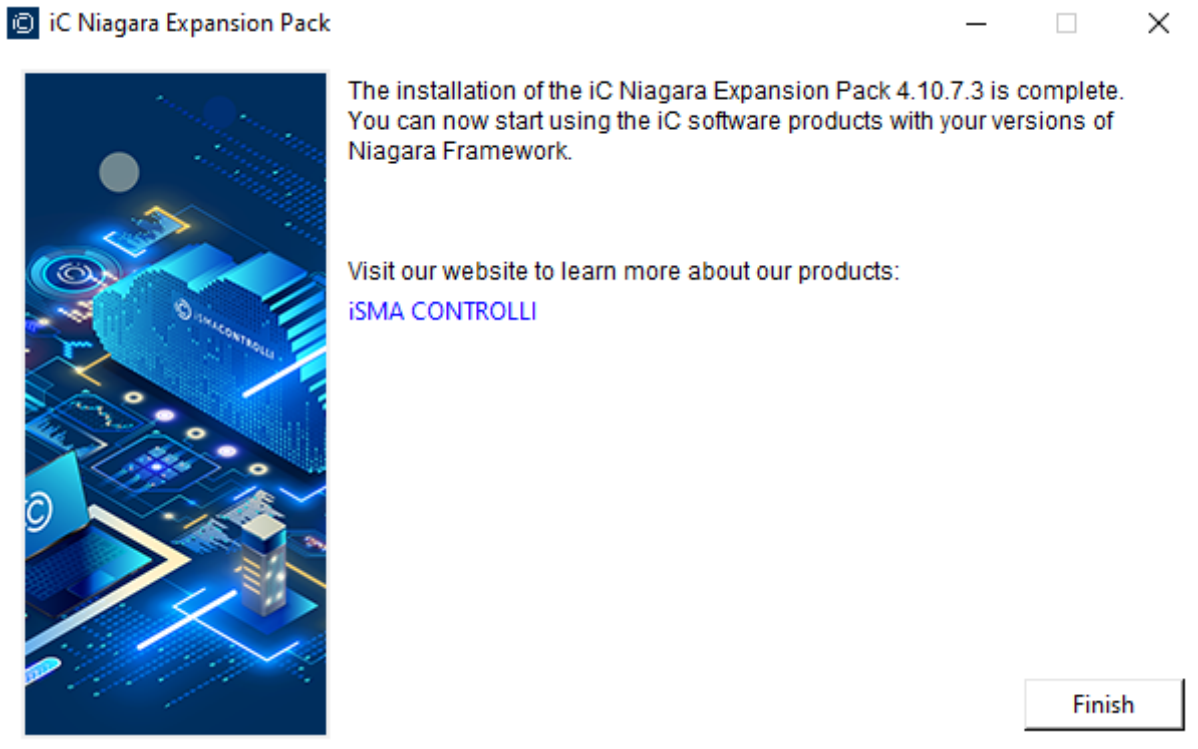


Figure 6. Installation summary window

3.7 Step 7: Using Modules in the Niagara Workbench

To start using installed files, navigate to the Niagara Workbench, and select the Open Palette option. Installed modules are available along with any other Niagara module.

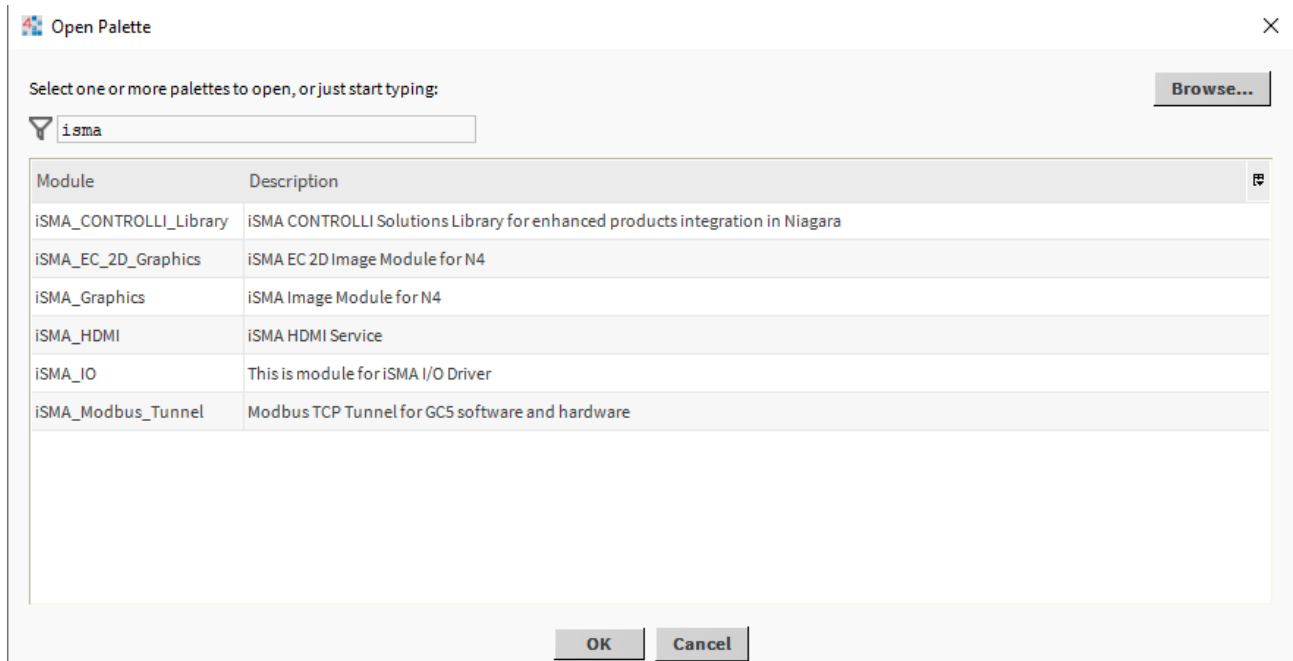


Figure 7. Open Palette window in the Niagara Workbench